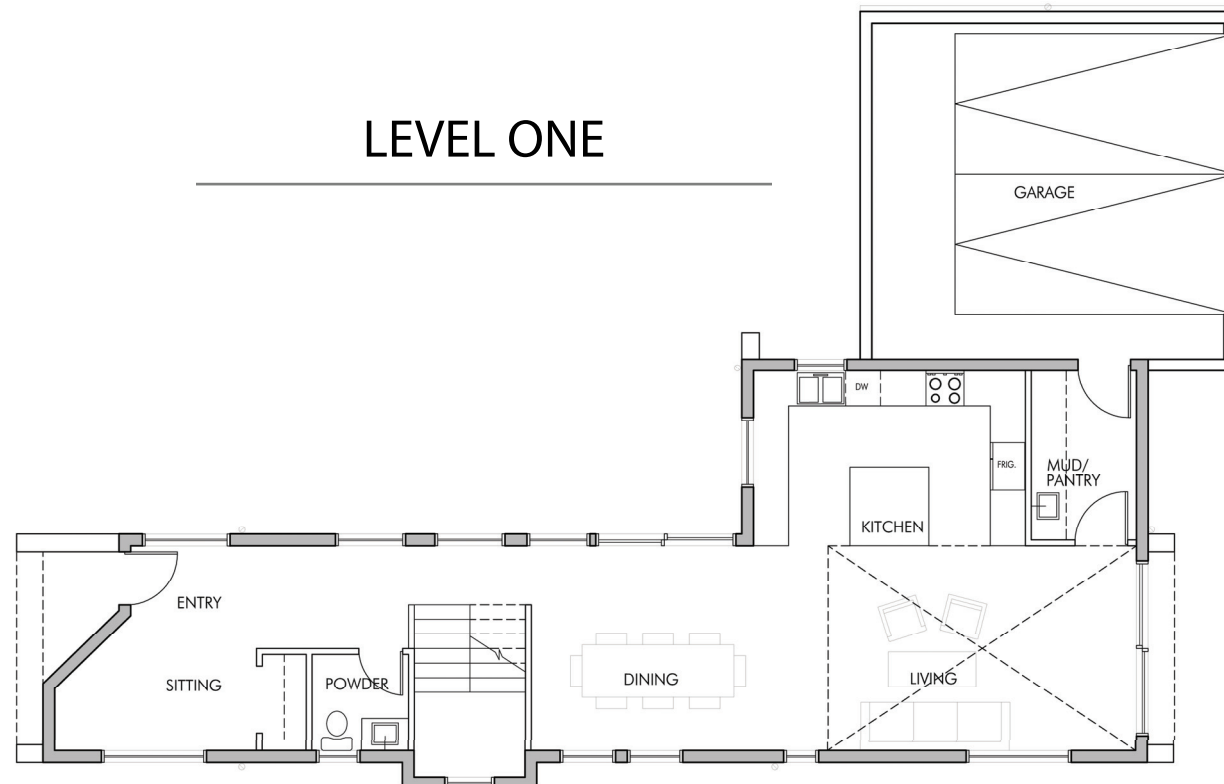




# 6608 Flora Avenue South, Seattle WA 98108

Approx. 2,850 SF | 3 Bedrooms | 2 1/2 Baths | 2-car Garage | Two Decks | Fenced Yard

5-Star Built Green | Equipped for Net Zero Living



## BUILDING SUMMARY

Level 1: 1023 SF | Level 2: 837 SF | Level 3: 976 SF | Total Living Space: 2,850 SF

Main Deck: 423 SF | Master Bedroom Deck: 87 SF | 2-Car Garage: 423 SF

All dimensions are approximate. This plan is for marketing and planning purposes only. Sizes, square footages, designs, layouts, drawings and prices are subject to modification. The information contained herein is provided as a courtesy only, is not a warranty, and should be independently investigated by Buyers.



[dwelldevelopment.com](http://dwelldevelopment.com)



[alloydg.com](http://alloydg.com)

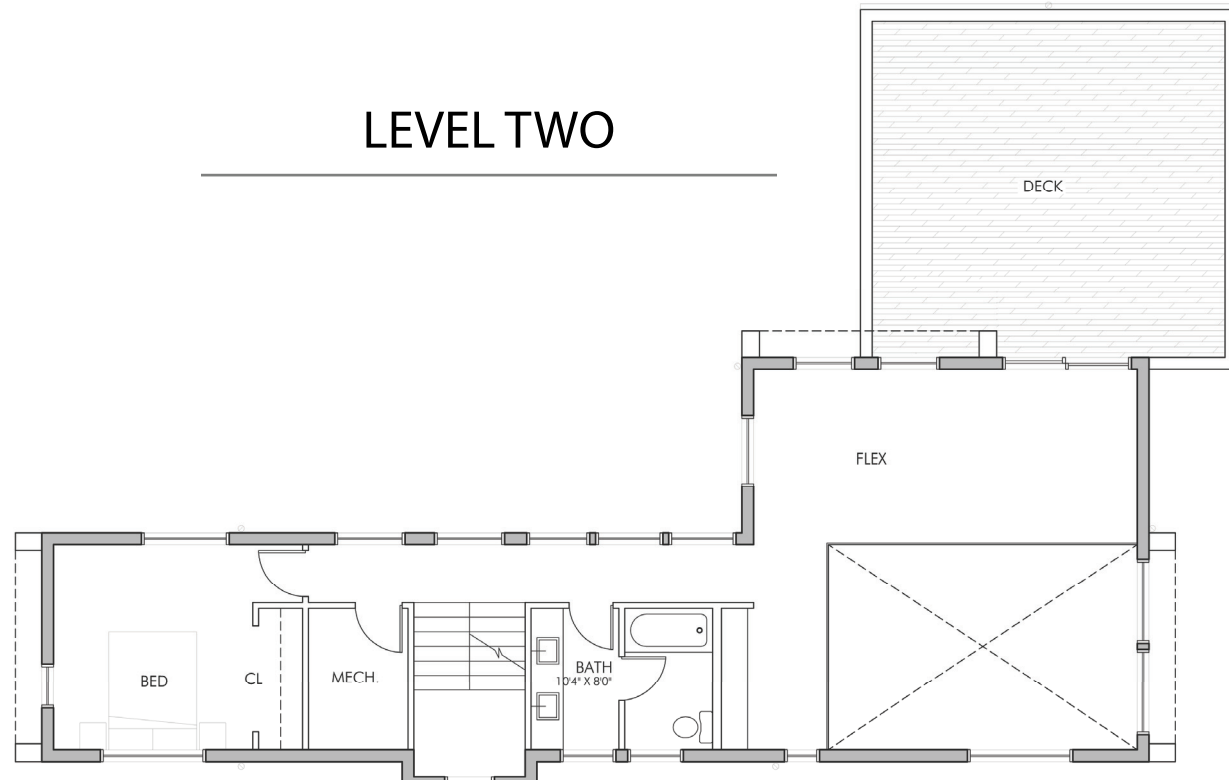
Presented by: Susan Stasik | Managing Broker | Windermere Real Estate Co. | [www.SusanStasik.com](http://www.SusanStasik.com) | [susanewindermere.com](http://susanewindermere.com) | 206-660-1012



# 6608 Flora Avenue South, Seattle WA 98108

Approx. 2,850 SF | 3 Bedrooms | 2 1/2 Baths | 2-car Garage | Two Decks | Fenced Yard

5-Star Built Green | Equipped for Net Zero Living



## BUILDING SUMMARY

Level 1: 1023 SF | Level 2: 837 SF | Level 3: 976 SF | Total Living Space: 2,850 SF

Main Deck: 423 SF | Master Bedroom Deck: 87 SF | 2-Car Garage: 423 SF

All dimensions are approximate. This plan is for marketing and planning purposes only. Sizes, square footages, designs, layouts, drawings and prices are subject to modification. The information contained herein is provided as a courtesy only, is not a warranty, and should be independently investigated by Buyers.



dwelldevelopment.com



alloydg.com

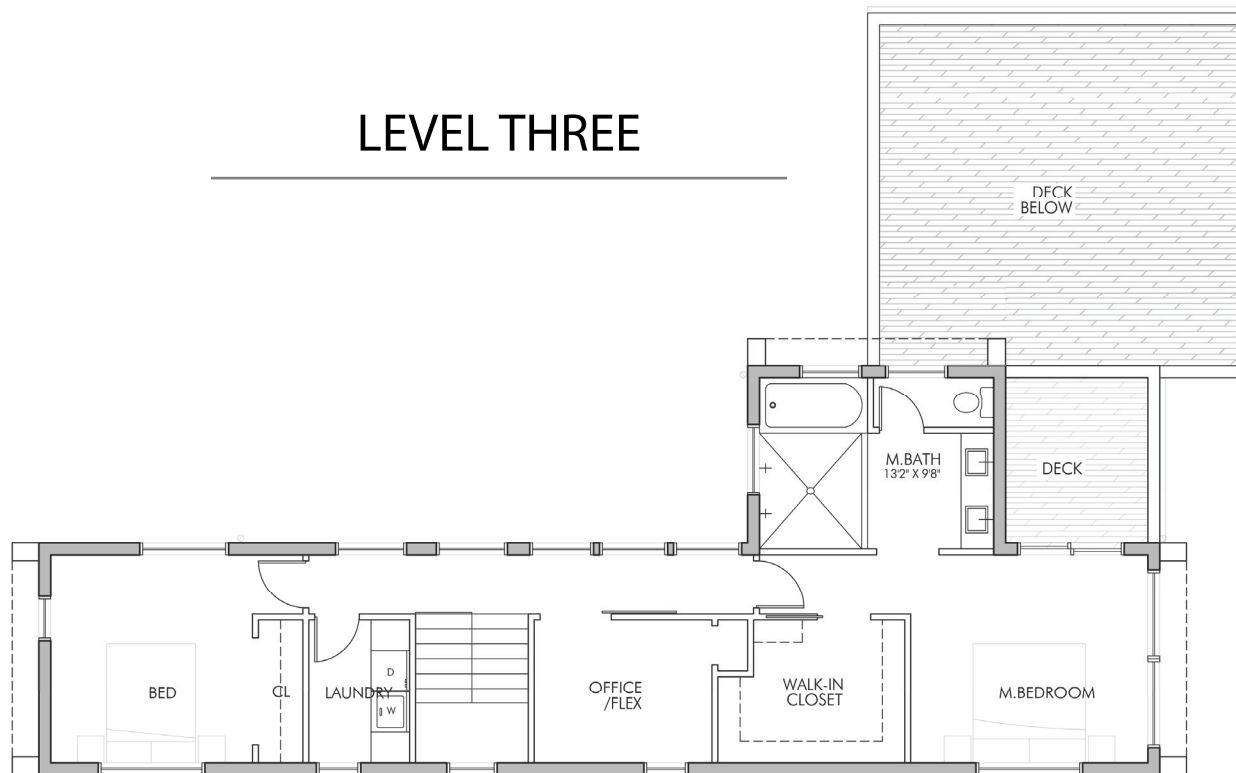
Presented by: Susan Stasik | Managing Broker | Windermere Real Estate Co. | [www.SusanStasik.com](http://www.SusanStasik.com) | [susanewindermere.com](mailto:susanewindermere.com) | 206-660-1012



# 6608 Flora Avenue South, Seattle WA 98108

Approx. 2,850 SF | 3 Bedrooms | 2 1/2 Baths | 2-car Garage | Two Decks | Fenced Yard

5-Star Built Green | Equipped for Net Zero Living



## BUILDING SUMMARY

Level 1: 1023 SF | Level 2: 837 SF | Level 3: 976 SF | Total Living Space: 2,850 SF

Main Deck: 423 SF | Master Bedroom Deck: 87 SF | 2-Car Garage: 423 SF

All dimensions are approximate. This plan is for marketing and planning purposes only. Sizes, square footages, designs, layouts, drawings and prices are subject to modification. The information contained herein is provided as a courtesy only, is not a warranty, and should be independently investigated by Buyers.



[dwelldevelopment.com](http://dwelldevelopment.com)



[alloydg.com](http://alloydg.com)

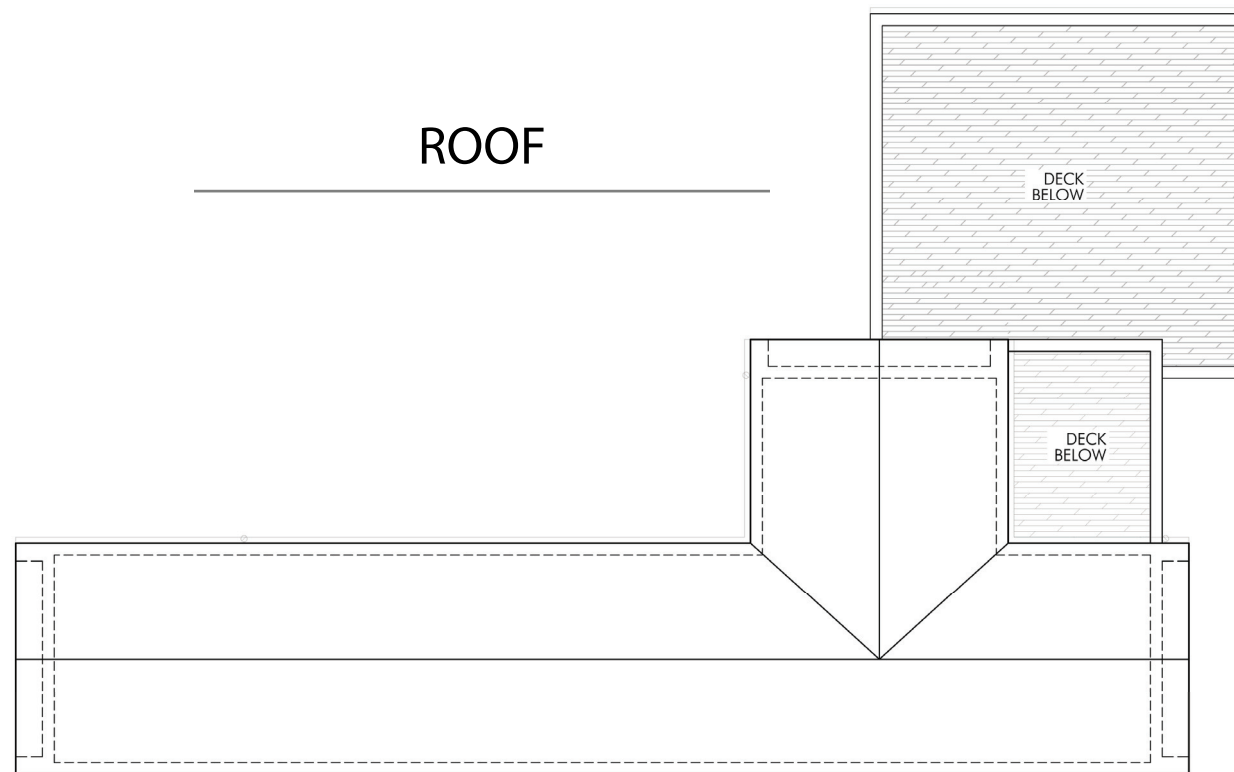
Presented by: Susan Stasik | Managing Broker | Windermere Real Estate Co. | [www.SusanStasik.com](http://www.SusanStasik.com) | [susanewindermere.com](http://susanewindermere.com) | 206-660-1012



# 6608 Flora Avenue South, Seattle WA 98108

Approx. 2,850 SF | 3 Bedrooms | 2 1/2 Baths | 2-car Garage | Two Decks | Fenced Yard

5-Star Built Green | Equipped for Net Zero Living



## BUILDING SUMMARY

Level 1: 1023 SF | Level 2: 837 SF | Level 3: 976 SF | Total Living Space: 2,850 SF

Main Deck: 423 SF | Master Bedroom Deck: 87 SF | 2-Car Garage: 423 SF

All dimensions are approximate. This plan is for marketing and planning purposes only. Sizes, square footages, designs, layouts, drawings and prices are subject to modification. The information contained herein is provided as a courtesy only, is not a warranty, and should be independently investigated by Buyers.



dwelldevelopment.com



alloydg.com

Presented by: Susan Stasik | Managing Broker | Windermere Real Estate Co. | [www.SusanStasik.com](http://www.SusanStasik.com) | [susanwindermere.com](http://susanwindermere.com) | 206-660-1012