



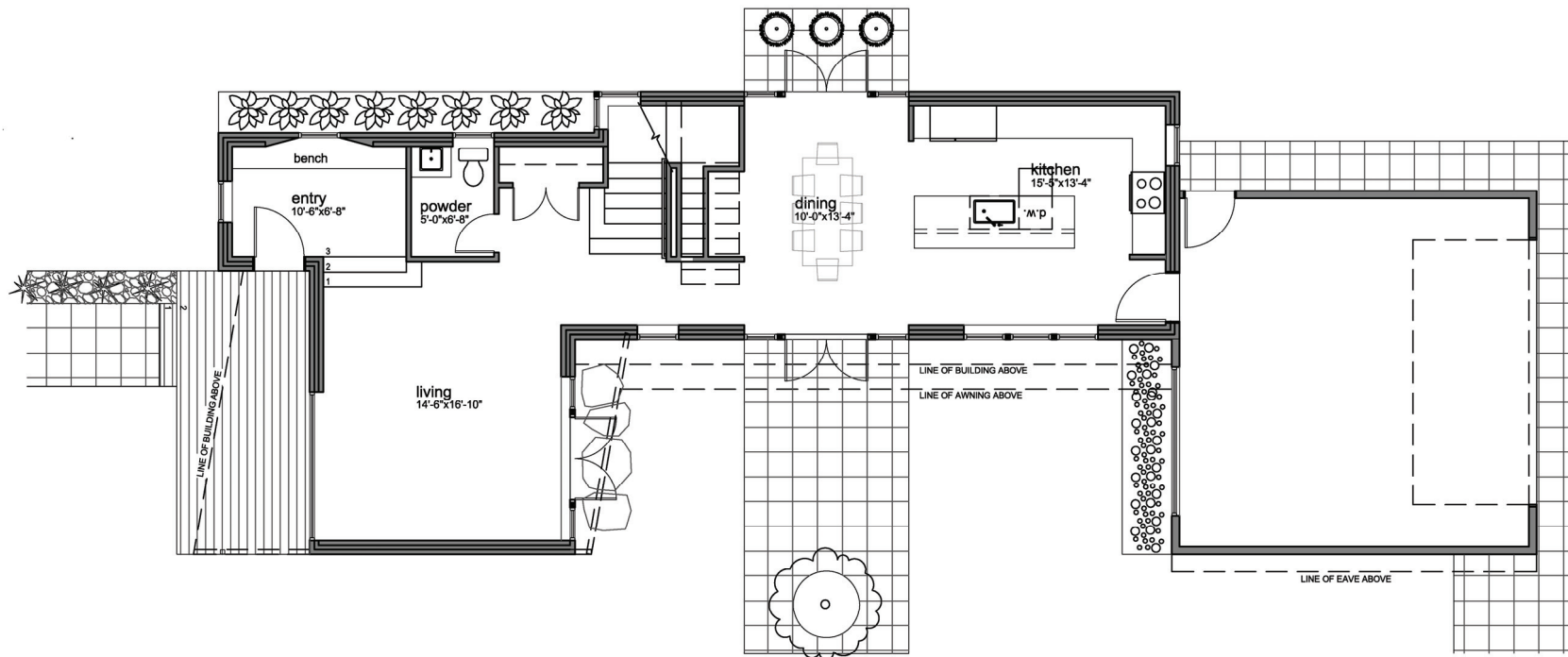
The Landing House | Georgetown

5-Star Built Green

6234 Flora Avenue South, Seattle WA 98108
Approx. 2,646 SF | 3 Bedrooms | 2 1/2 Baths | 2-car Garage | Rooftop Deck



LEVEL ONE



BUILDING SUMMARY

Level One: 998 SF | Level Two: 1083 SF | Level Three: 565 SF | Total Living Space: 2,646 SF | Rooftop Deck: 389 SF | 2-Car Garage: 484 SF

All dimensions are approximate. This plan is for marketing and planning purposes only. Sizes, square footages, designs, layouts, drawings and prices are subject to modification. Information contained herein is provided as a courtesy only, is not a warranty, and should be independently investigated by Buyers.



www.dwelldevelopment.com | www.jwaseattle.com

Presented by: Susan Stasik | Managing Broker | Windermere Real Estate Co. | www.SusanStasik.com | susan@windermere.com | 206-660-1012



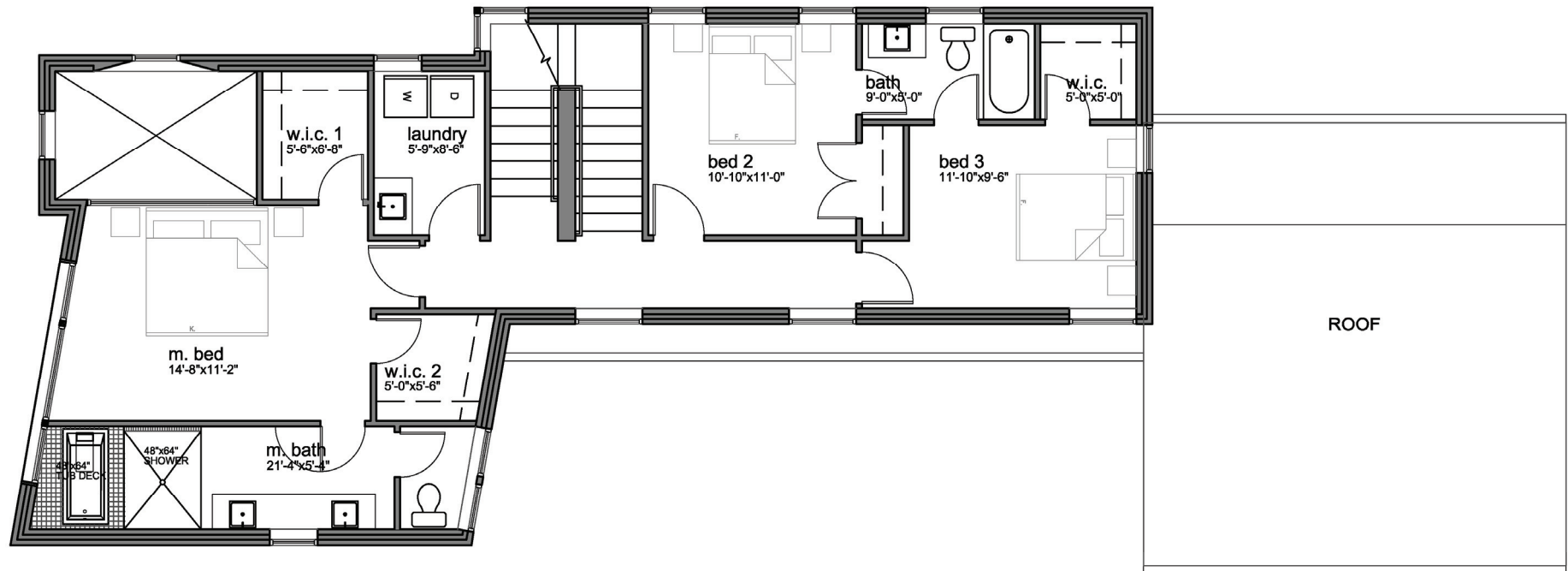
The Landing House | Georgetown

5-Star Built Green

6234 Flora Avenue South, Seattle WA 98108
Approx. 2,646 SF | 3 Bedrooms | 2 1/2 Baths | 2-car Garage | Rooftop Deck



LEVEL TWO



BUILDING SUMMARY

Level One: 998 SF | Level Two: 1083 SF | Level Three: 565 SF | Total Living Space: 2,646 SF | Rooftop Deck: 389 SF | 2-Car Garage: 484 SF

All dimensions are approximate. This plan is for marketing and planning purposes only. Sizes, square footages, designs, layouts, drawings and prices are subject to modification. Information contained herein is provided as a courtesy only, is not a warranty, and should be independently investigated by Buyers.



www.dwelldevelopment.com |  www.jwaseattle.com

Presented by: Susan Stasik | Managing Broker | Windermere Real Estate Co. | www.SusanStasik.com | susan@windermere.com | 206-660-1012

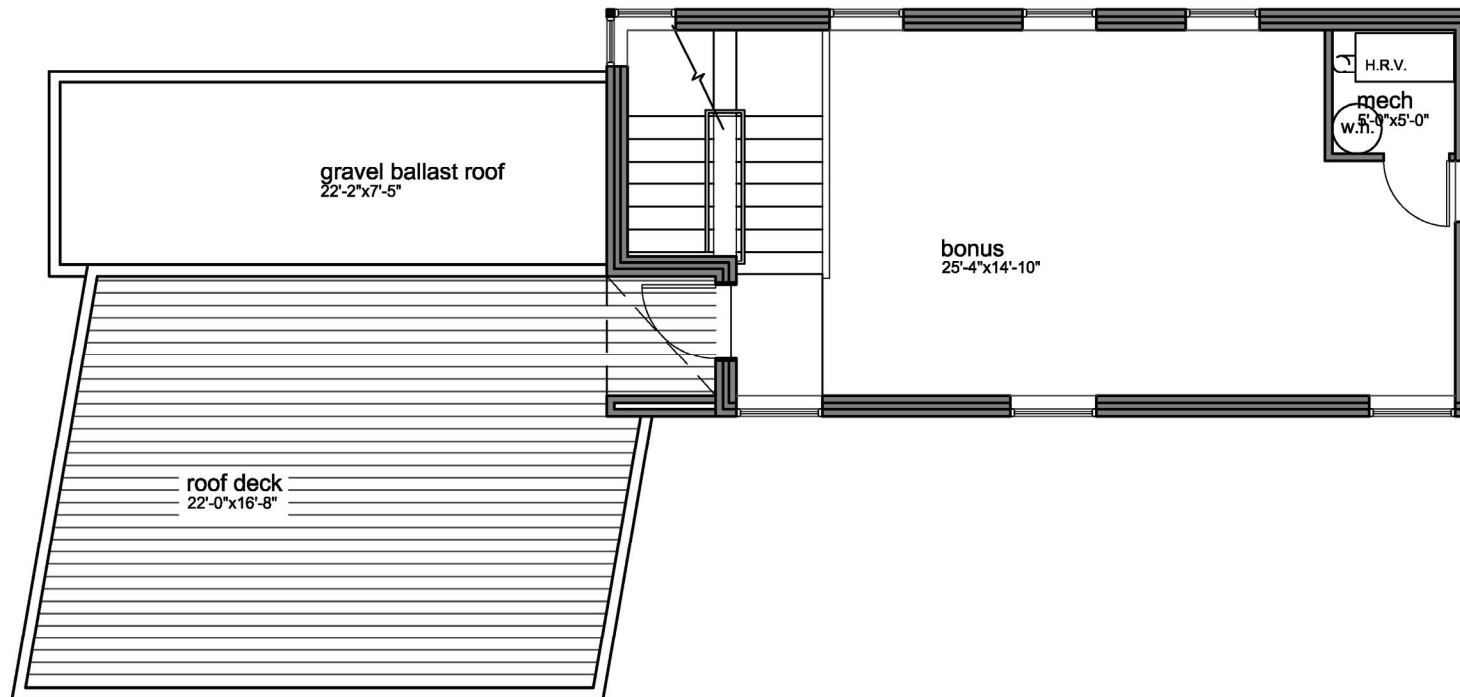


The Landing House | Georgetown 5-Star Built Green

6234 Flora Avenue South, Seattle WA 98108
Approx. 2,646 SF | 3 Bedrooms | 2 1/2 Baths | 2-car Garage | Rooftop Deck



LEVEL THREE



BUILDING SUMMARY

Level One: 998 SF | Level Two: 1083 SF | Level Three: 565 SF | Total Living Space: 2,646 SF | Rooftop Deck: 389 SF | 2-Car Garage: 484 SF

All dimensions are approximate. This plan is for marketing and planning purposes only. Sizes, square footages, designs, layouts, drawings and prices are subject to modification.
Information contained herein is provided as a courtesy only, is not a warranty, and should be independently investigated by Buyers.



www.dwelldevelopment.com |  www.jwaseattle.com

Presented by: Susan Stasik | Managing Broker | Windermere Real Estate Co. | www.SusanStasik.com | susan@windermere.com | 206-660-1012



The Landing House | Georgetown

5-Star Built Green

6234 Flora Avenue South, Seattle WA 98108
Approx. 2,646 SF | 3 Bedrooms | 2 1/2 Baths | 2-car Garage | Rooftop Deck



FRONT CORNER



BUILDING SUMMARY

Level One: 998 SF | Level Two: 1083 SF | Level Three: 565 SF | Total Living Space: 2,646 SF | Rooftop Deck: 389 SF | 2-Car Garage: 484 SF

All dimensions are approximate. This plan is for marketing and planning purposes only. Sizes, square footages, designs, layouts, drawings and prices are subject to modification. Information contained herein is provided as a courtesy only, is not a warranty, and should be independently investigated by Buyers.



www.dwelldevelopment.com |  www.jwaseattle.com

Presented by: Susan Stasik | Managing Broker | Windermere Real Estate Co. | www.SusanStasik.com | susan@windermere.com | 206-660-1012



The Landing House | Georgetown

5-Star Built Green

6234 Flora Avenue South, Seattle WA 98108
Approx. 2,646 SF | 3 Bedrooms | 2 1/2 Baths | 2-car Garage | Rooftop Deck



ENTRANCE



BUILDING SUMMARY

Level One: 998 SF | Level Two: 1083 SF | Level Three: 565 SF | Total Living Space: 2,646 SF | Rooftop Deck: 389 SF | 2-Car Garage: 484 SF

All dimensions are approximate. This plan is for marketing and planning purposes only. Sizes, square footages, designs, layouts, drawings and prices are subject to modification.
Information contained herein is provided as a courtesy only, is not a warranty, and should be independently investigated by Buyers.



www.dwelldevelopment.com |  www.jwaseattle.com

Presented by: Susan Stasik | Managing Broker | Windermere Real Estate Co. | www.SusanStasik.com | susan@windermere.com | 206-660-1012



The Landing House | Georgetown

5-Star Built Green

6234 Flora Avenue South, Seattle WA 98108
Approx. 2,646 SF | 3 Bedrooms | 2 1/2 Baths | 2-car Garage | Rooftop Deck



COURTYARD



BUILDING SUMMARY

Level One: 998 SF | Level Two: 1083 SF | Level Three: 565 SF | Total Living Space: 2,646 SF | Rooftop Deck: 389 SF | 2-Car Garage: 484 SF

All dimensions are approximate. This plan is for marketing and planning purposes only. Sizes, square footages, designs, layouts, drawings and prices are subject to modification.
Information contained herein is provided as a courtesy only, is not a warranty, and should be independently investigated by Buyers.



www.dwelldevelopment.com |  www.jwaseattle.com

Presented by: Susan Stasik | Managing Broker | Windermere Real Estate Co. | www.SusanStasik.com | susan@windermere.com | 206-660-1012



The Landing House | Georgetown 5-Star Built Green

6234 Flora Avenue South, Seattle WA 98108
Approx. 2,646 SF | 3 Bedrooms | 2 1/2 Baths | 2-car Garage | Rooftop Deck



ROOFTOP DECK



BUILDING SUMMARY

Level One: 998 SF | Level Two: 1083 SF | Level Three: 565 SF | Total Living Space: 2,646 SF | Rooftop Deck: 389 SF | 2-Car Garage: 484 SF

All dimensions are approximate. This plan is for marketing and planning purposes only. Sizes, square footages, designs, layouts, drawings and prices are subject to modification.
Information contained herein is provided as a courtesy only, is not a warranty, and should be independently investigated by Buyers.



www.dwelldevelopment.com |  www.jwaseattle.com

Presented by: Susan Stasik | Managing Broker | Windermere Real Estate Co. | www.SusanStasik.com | susan@windermere.com | 206-660-1012



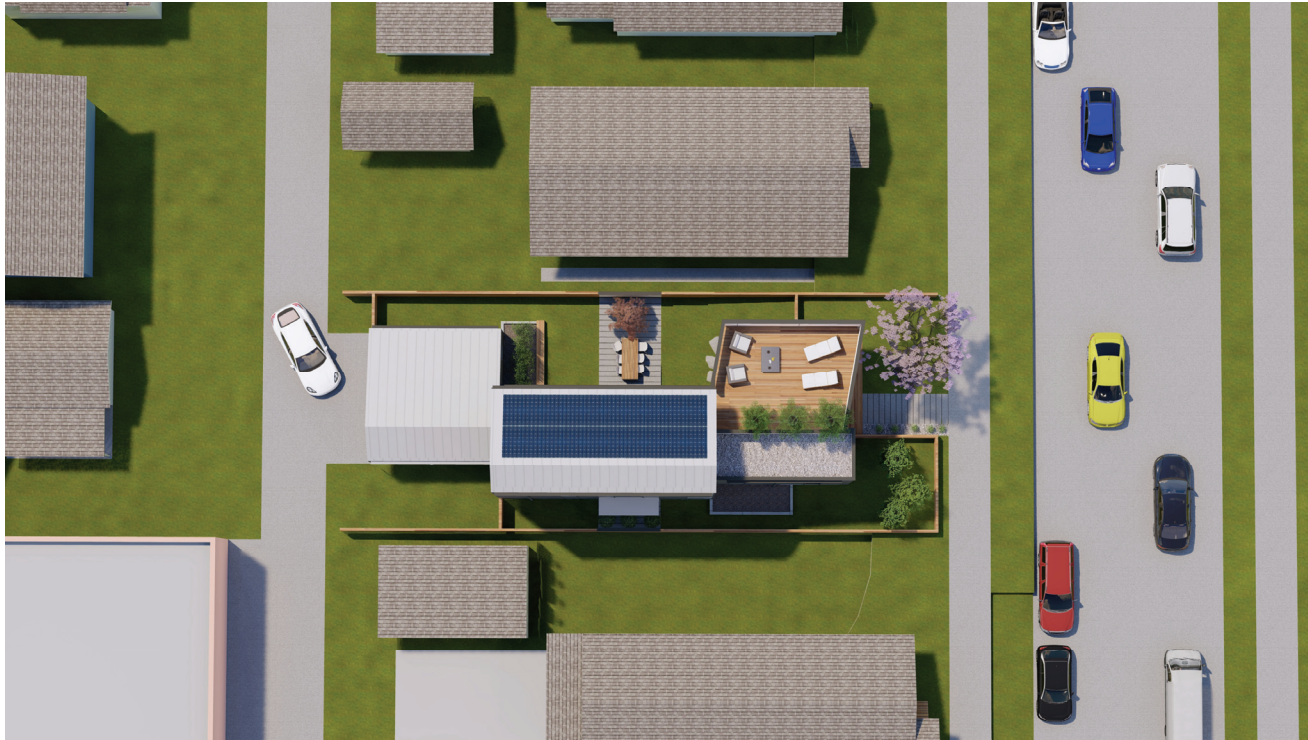
The Landing House | Georgetown

5-Star Built Green

6234 Flora Avenue South, Seattle WA 98108
Approx. 2,646 SF | 3 Bedrooms | 2 1/2 Baths | 2-car Garage | Rooftop Deck



SITE PLAN



BUILDING SUMMARY

Level One: 998 SF | Level Two: 1083 SF | Level Three: 565 SF | Total Living Space: 2,646 SF | Rooftop Deck: 389 SF | 2-Car Garage: 484 SF

All dimensions are approximate. This plan is for marketing and planning purposes only. Sizes, square footages, designs, layouts, drawings and prices are subject to modification.
Information contained herein is provided as a courtesy only, is not a warranty, and should be independently investigated by Buyers.



www.dwelldevelopment.com |  www.jwaseattle.com

Presented by: Susan Stasik | Managing Broker | Windermere Real Estate Co. | www.SusanStasik.com | susan@windermere.com | 206-660-1012